

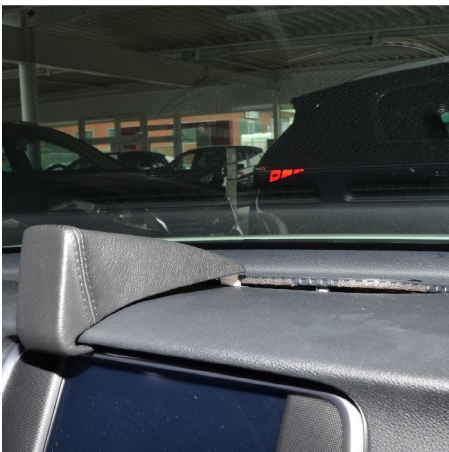
Kia Optima 2015-



Lautsprecherabdeckung lösen



Loosen speaker cover



Linke Lasche hinter die Mittelkonsole haken und dabei hochschieben
Konsole einhaken



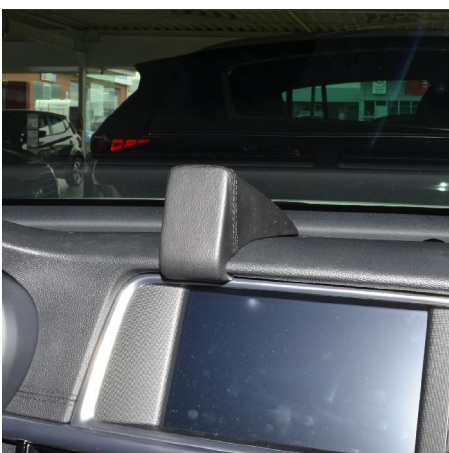
Hook left bracket behind center console while pushing upwards
Hook into console



Beiliegende Schraube ins hintere Blech eindrehen



Install enclosed screw into rear metal plate



Lautsprecherabdeckung wieder einsetzen





Reinstall speaker cover

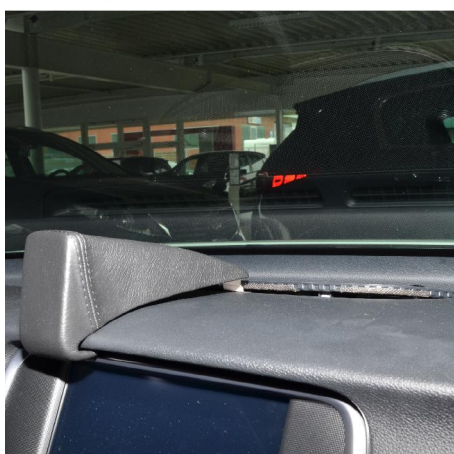
Änderungen vorbehalten Subject to change


Kia Optima 2015-




 Enlevez la couverture d'haut-parleur


 Suelte el revestimiento del altavoz




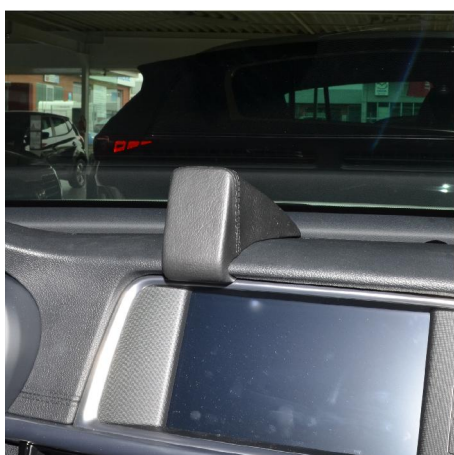
 Agrafez la patte gauche arrière la console médiane et poussez vers le haut
Accrochez la console


 Enganche el cubrejunta detrás de la consola central y al mismo tiempo empújela
Enganche la consola.



 Vissez la vis jointe dans la tôle de derrière

 Instale el tornillo adjunto en la chapa trasera



 Posez la couverture d'haut-parleur de nouveau

 Reinstale el revestimiento del altavoz

Nous nous réservons la possibilité de modification Salvo posibles modificaciones

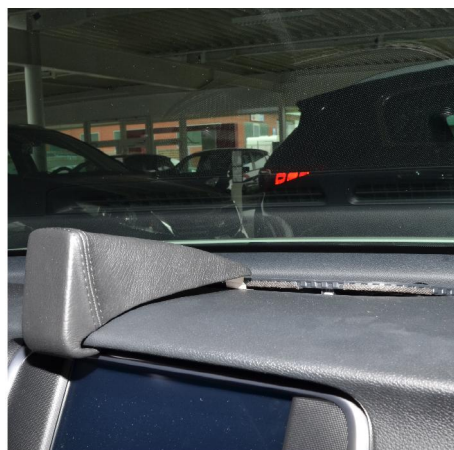
Kia Optima 2015-



Luidsprekerpaneel losmaken



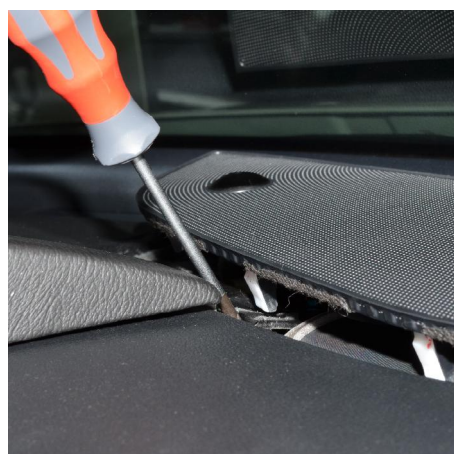
Pokrywe glosnika zdemontowac



Linker klep achter de middentunnel haken en daarbij omhoog schuiven
Konsole inhaken / aanbrengen



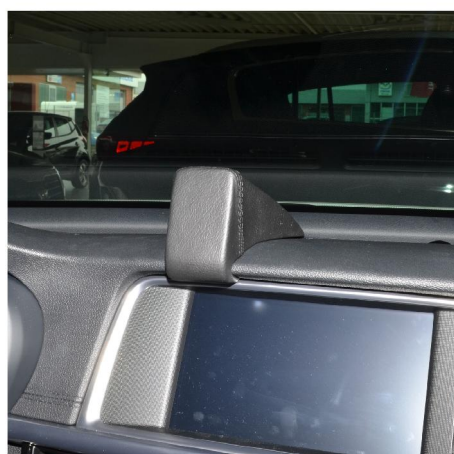
Lewa plytke za srodkowa konsola zahaczyc i przytym do gory wsuwac
Zaczepic konsole



Bijgevoegde schroef in de achterste plaat draaien



Zalaczona srube w tylna blaszke wkrecic



Reinstale el revestimiento del altavoz



Pokrywe glosnika ponownie zamontowac

Nous nous réservons la possibilité de modification Salvo posibles modificaciones